



# Jade<sup>®</sup> Fungicide

## BioPriority Solution

**Jade Turf Fungicide** is a non-conventional OMRI certified fungicide for use treating turfgrass on golf course greens, tees, fairways & roughs, as well as sports & athletic fields.

**Jade Turf Fungicide** is used as a preventative treatment for the control of Dollar spot and Microdochium patch on turf. **Jade** acts by providing a barrier that prevents fungal spores from germinating or penetrating host plant cells, and by activating a natural defense pathway within the plant called Induced Systemic Resistance (ISR).



May be used in certified organic production in accordance with the Canadian Organic Standards.



Active Ingredient
Mineral oil – 817 g/L
Fungicide Group
Not classified
Formulation
Emulsifiable Concentrate
Phytomobility
Contact
Package Size
20 L

## Contact Us

Grover	647 225 8035	paul.grotier@belchim.com
BJ	416 457 7785	billyjoe.carey@belchim.com
Big Bear	519 820 8929	barry.johnson@belchim.com



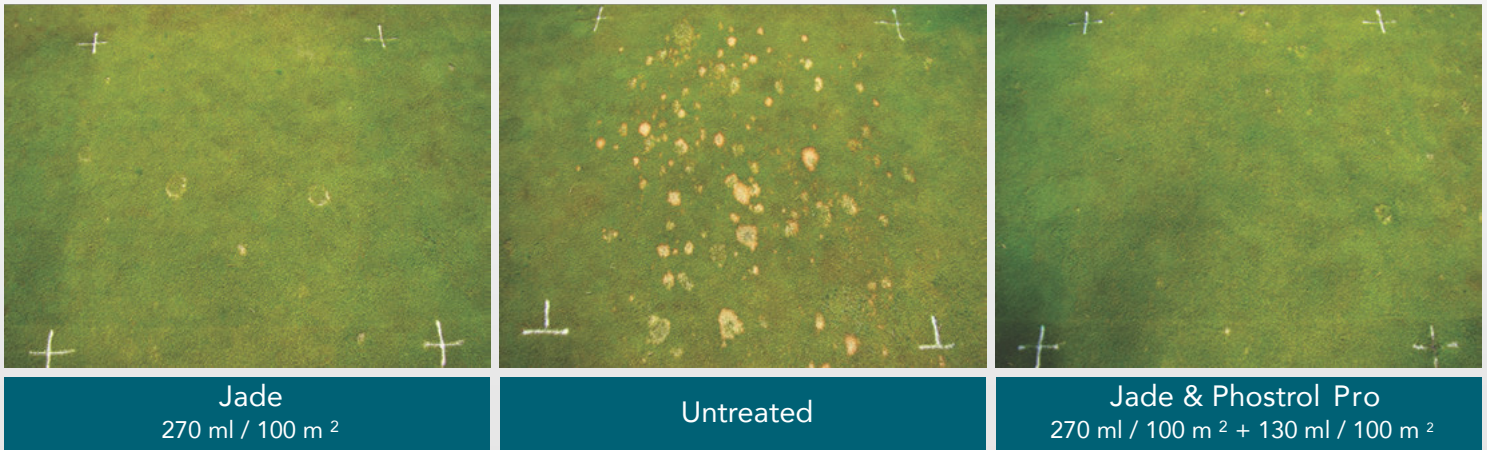
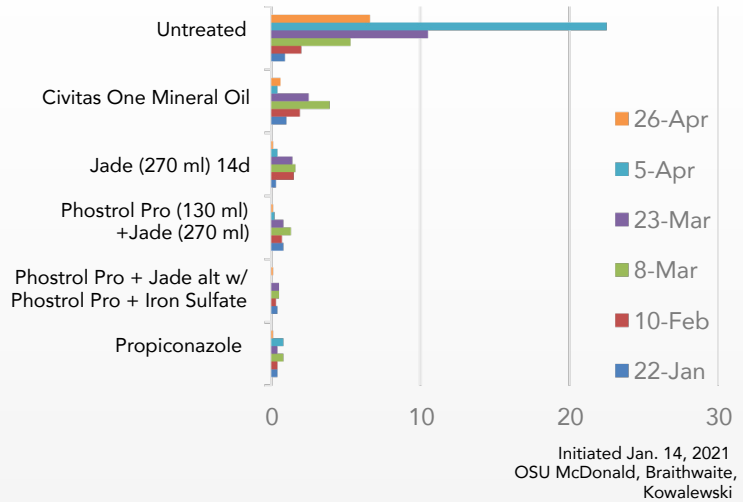
[www.belchimturf.ca](http://www.belchimturf.ca)

# Belchim Research Centre

## Natural Protection (ISR)

In addition to creating a physical barrier against disease infection, **Jade** activates a natural defense pathway within the plant called Induced Systemic Resistance (ISR). ISR recruits the plants own defence system to fight infection. Preventative applications of **Jade Turf fungicide** precondition the turf plant to be ready to defend itself prior to pathogen infection. Once the plant detects an infection the plants natural defence activates to control the disease.

## Microdochium Patch



## Jade Turf Fungicide Label Summary

Disease Controlled	Rate (/100 m <sup>2</sup> )	App Interval (days)	Water Volume (/100 m <sup>2</sup> )
Dollar Spot	250 – 500 ml	14	4-20 L
Microdochium Patch	270 ml		

## Application Instructions

- Jade Turf Fungicide should only be applied to non-dormant, healthy turf.
- Jade Turf Fungicide should be applied 7-14 days before onset of disease, turf dormancy, biotic or abiotic stressors.
- Avoid spraying during or immediately prior to hot or freezing weather, rain or other unsuitable conditions.
- Before using, make certain spray tank is free of sulphur residues.
- Do not apply more than 8L of Jade Turf Fungicide /100m<sup>2</sup>/year.

## Jade Coverage

Labelled Rate (/100 m <sup>2</sup> )	1 Jug (20 L)
250 ml	2.0 ac
270 ml	1.8 ac
500 ml	1.0 ac

Always read and follow label instructions

Jade is a registered trademark of Belchim Crop Protection Canada  
BioPriority is a trademark of Belchim Crop Protection Canada



**Belchim Canada**  
GROWING TOGETHER